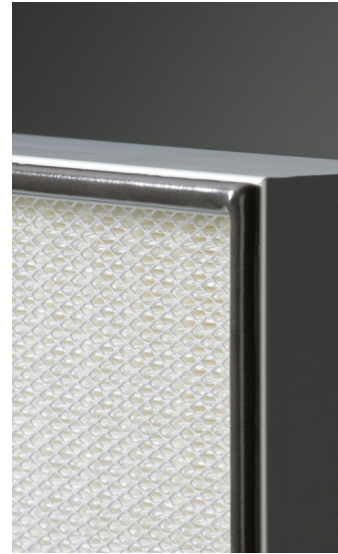


(H)EPA Filters

Removal of particulates (bacteria, spores, viruses, radioactive fallout, toxic dust, etc.) smaller than 1 micron in size from air can be a particularly demanding task. EMW® offers air filter range for these applications in EN 1822 Filter Classes E10-E12 (EPA) and H13-H14 (HEPA). EMW® filters are used in hospitals, clean rooms and any other applications requiring clean air in conformance with strictest standards.

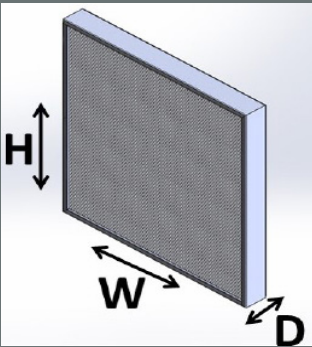
EMW®'s RS filters are available in all common dimensions. Their high-quality glass-fibre medium is securely joined to the filter frame with a cast airtight joint. Various frame versions are offered including anodised aluminium and other materials. Protective grids are available as options which can be installed on either side as required. A continuous foamed-in-place seal over the joint further enhances airtightness.



In Filter Classes E10-E12 and H13-H14

RS Filters

Frame depth: 66mm



Dimensions (WxHxD)

305 x 305 x 66 mm

457 x 457 x 66 mm

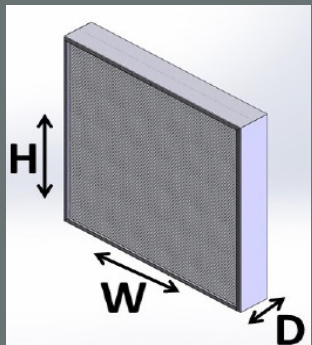
610 x 610 x 66 mm

762 x 762 x 66 mm

915 x 915 x 66 mm

RS Filters

Frame depth: 90mm



Dimensions (WxHxD)

305 x 305 x 90 mm

457 x 457 x 90 mm

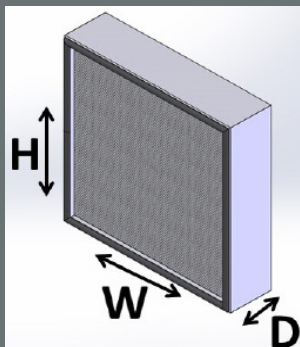
610 x 610 x 90 mm

762 x 762 x 90 mm

915 x 915 x 90 mm

RS Filters

Frame depth: 117mm



Dimensions (WxHxD)

305 x 305 x 117 mm

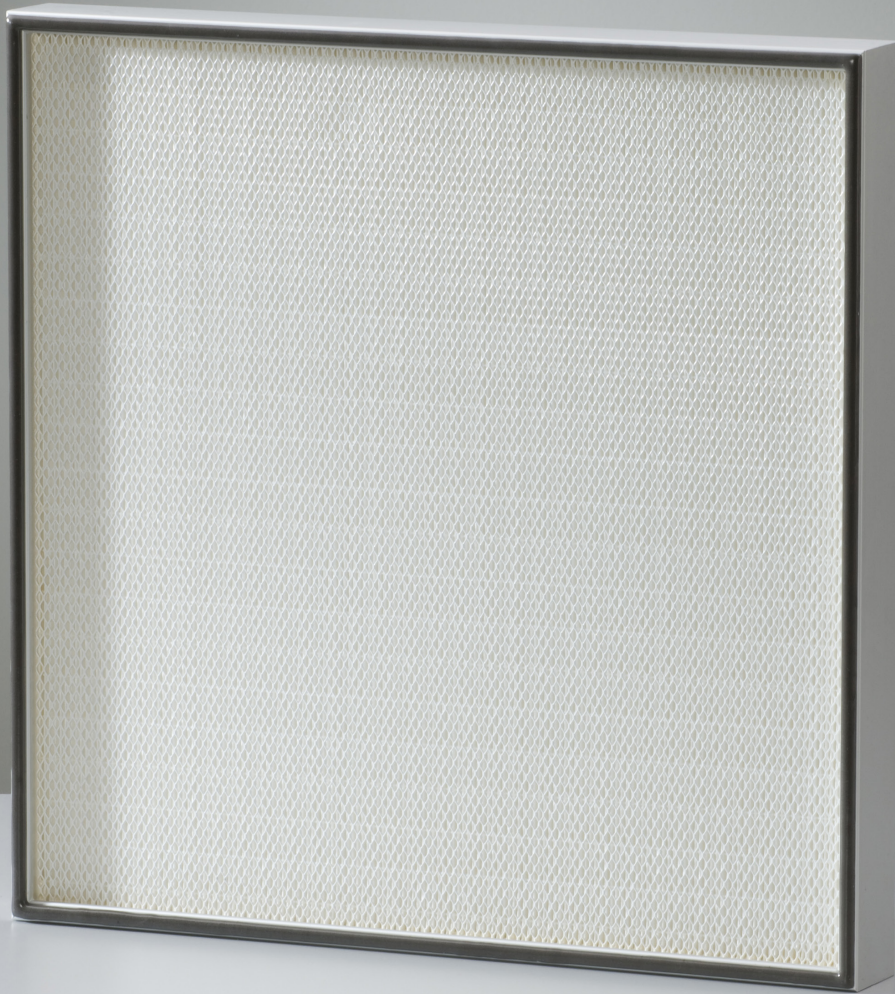
457 x 457 x 117 mm

610 x 610 x 117 mm

762 x 762 x 117 mm

915 x 915 x 117 mm

Other dimensions available on request



In EN 1822 Filter Classes E10-E12 and H13-H14.

(H)EPA Filters