

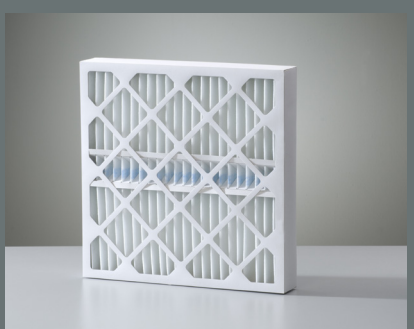
Panel Filters

Z-Line Prefiltration Cells

Z-Line filter media are made up of 100% synthetic materials and are available in cardboard, plastic or metal frames.

- Available in EN 779 Filter Classes G4 and M5-F9
- Reliable service even at 100% relative humidity
- Supplied in cardboard, plastic or metal frame

Z-Line
cardboard frame



Dimensions (WxHxD)

594 x 594 x 48 mm

594 x 594 x 96 mm

495 x 594 x 48 mm

495 x 594 x 96 mm

290 x 594 x 48 mm

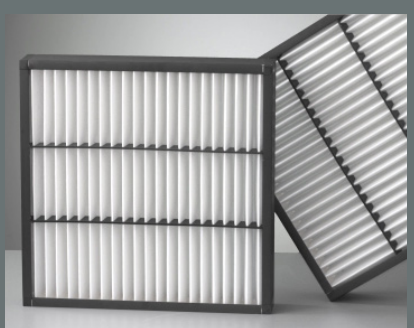
290 x 594 x 96 mm

Other dimensions
available on request

TOUGHER demands are mastered routinely by EMW® Z-Line GT filters.

Their filter medium is mounted as solid as a rock in their plastic frame. Even under high aerodynamic stresses, they are not leakage permitting lateral air flow around the filter. Stabilizers provide additional reinforcement of the filter medium. The design configuration prevents distortion while maintaining low pressure drop and virtually constant filtration efficiency.

Z-Line GT
plastic frame



Dimensions (WxHxD)

592 x 592 x 48 mm

592 x 592 x 96 mm

592 x 592 x 100 mm

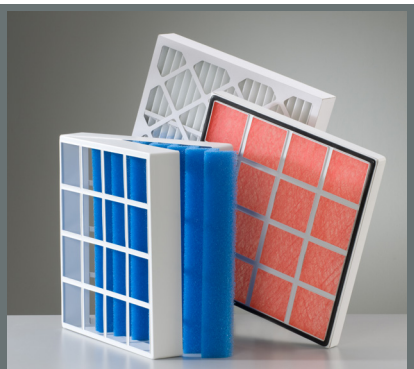
592 x 592 x 150 mm

Other dimensions
available on request

Filter Media in Reusable Plastic Frames

EMW® reusable plastic frames are ideal for cost-efficient filter changes. The used filter medium is simply taken out and replaced by a new medium without changing the frame. This option is available with our Verfiltan® and Synfasan® media as well as our Poret® open-cell foam filters.

Filter media in
reusable plastic frames



Dimensions (WxHxD)

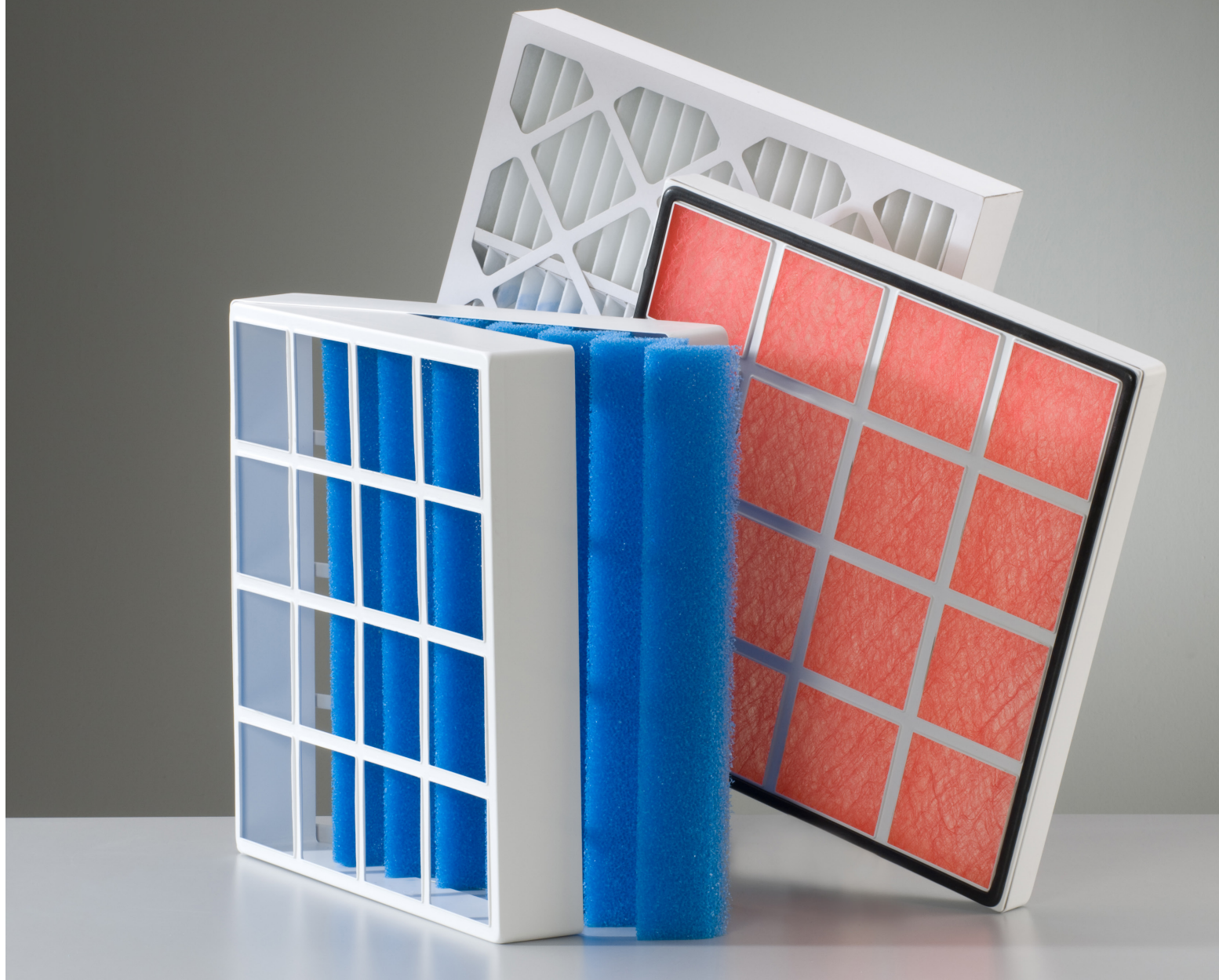
596 x 596 x 25 mm

596 x 596 x 50 mm

596 x 596 x 75 mm

596 x 596 x 100 mm

Other dimensions
available on request



Filter media mounted in various frames,
in Filter Classes G2-G4 and M5-F9.

Panel Filters